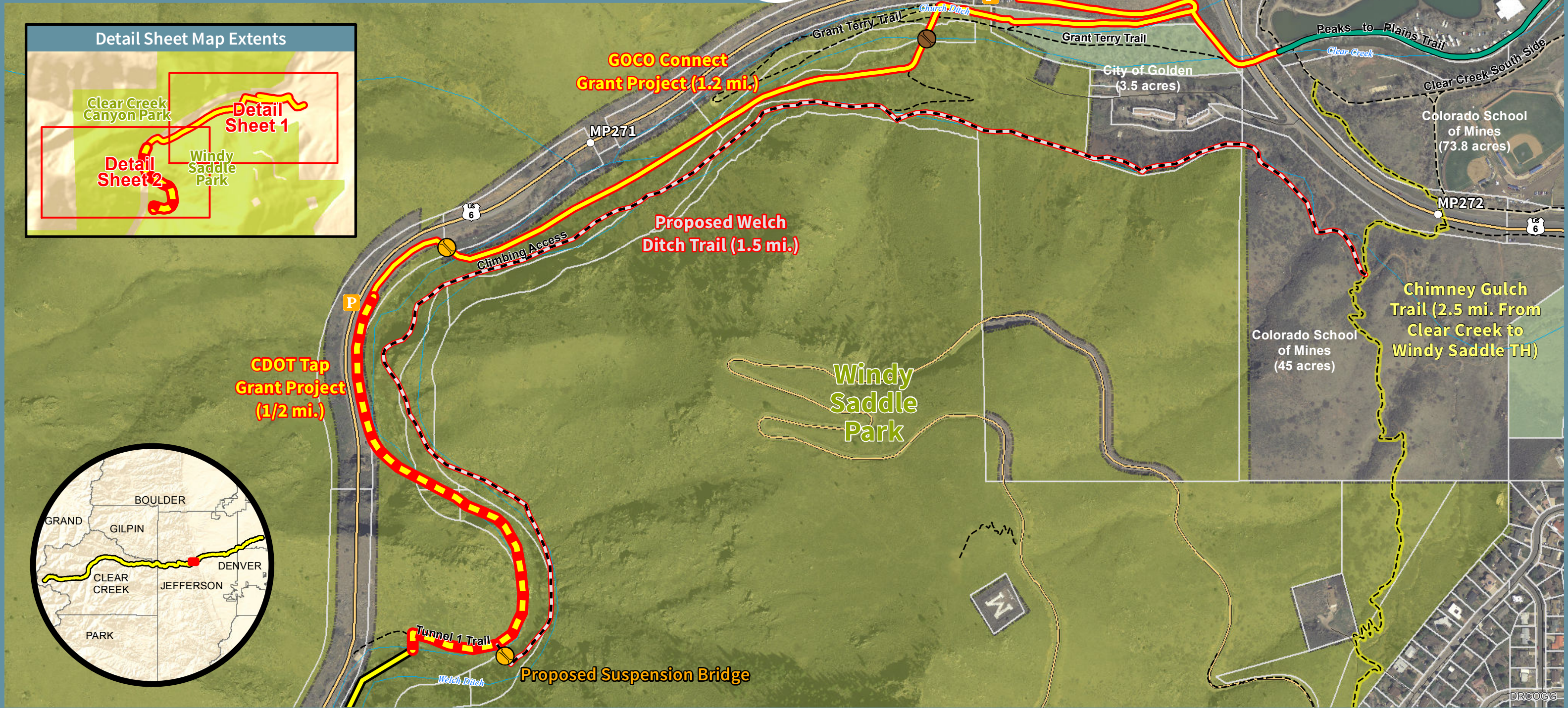
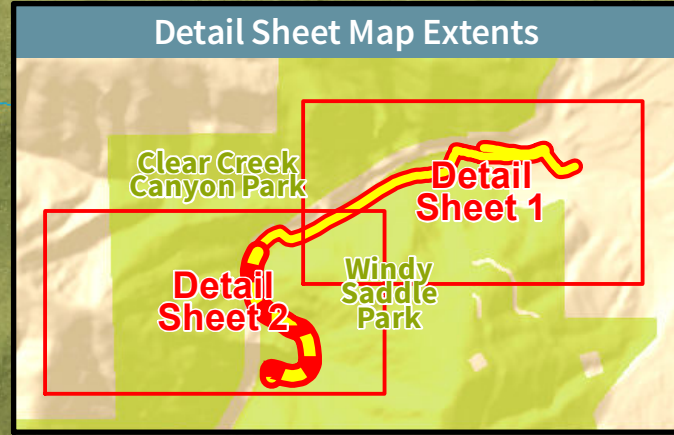


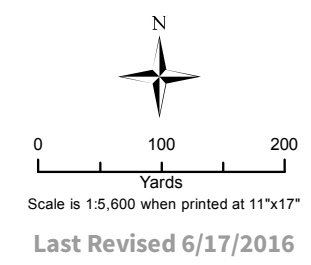
# Peaks to Plains Trail



Mouth of Clear Creek Canyon



- Existing Pedestrian Bridge
- Proposed Bridge
- Proposed Parking
- CDOT TAP Grant Project
- GOCO Connect Grant Project
- Peaks to Plains Trail (Future)
- Peaks to Plains Trail (Complete)
- Proposed Welch Ditch Trail
- Existing Shared Use Trail
- Chimney Gulch Trail
- Parcel Boundary
- Jeffco Open Space Owned
- Local City or Town (Park, Conservation, or Municipal Land)



Data Sources: Jeffco Open Space, Jeffco ITS, USGS, NHD, CDOT

Disclaimer: This information/map is the property of the Jefferson County Open Space Program (JCOS), Jefferson County, Colorado and is copyrighted material. Reproduction, manipulation or distribution of this product is prohibited without the prior written consent of JCOS staff. Jefferson County does not warrant the completeness, accuracy, or correctness of this product, its use for any purpose, and shall not be liable for damages of any kind arising from use of the product or for any errors or inaccuracies.



Document Path: M:\GIS\PARK\_PLANNERS\Projects\2016\05\_P2P\_PeaksToPlainsTrail\Map\_Tap\_Grant\_2016\TAP\_P2P\_Tra\_Mouth\_of\_Canyon\_11x17\_Landscape\_20160616.mxd Date: 6/17/2016